

A Response Surface Approach to Beam Orientation Optimization in Intensity Modulated Radiation Therapy Treatment Planning

Dionne M. Aleman, H. Edwin Romeijn

Department of Industrial and Systems Engineering, University of Florida, 303 Weil Hall, P.O. Box 116595, Gainesville, FL 32611-6595, USA, {daleman1@ufl.edu, romeijn@ise.ufl.edu}

James F. Dempsey

Department of Radiation Oncology, University of Florida, P.O. Box 100385, Gainesville, FL 32610-0385, USA, dempsey@ufl.edu

1. Full-color version of Figure 5

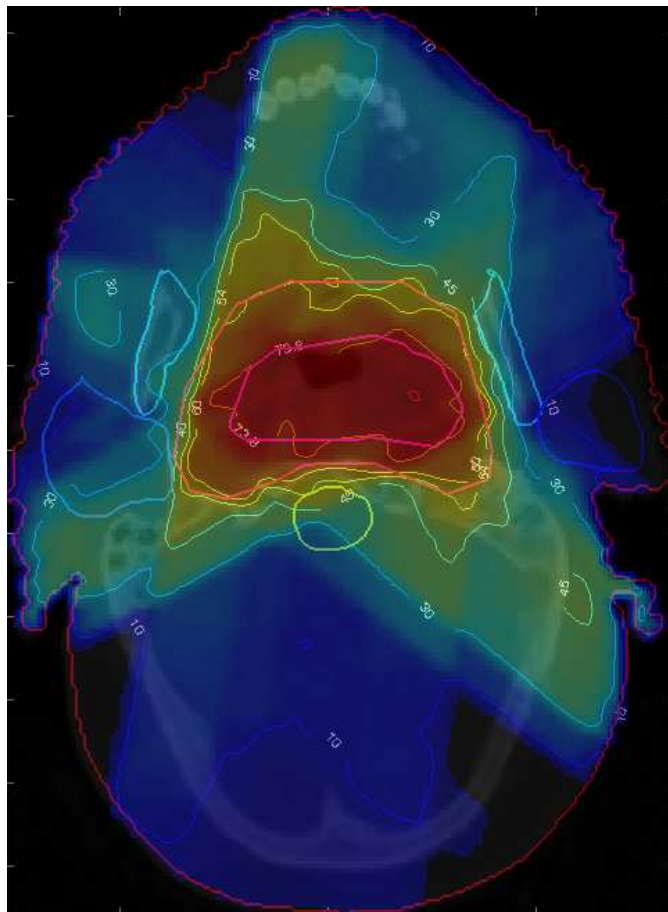


Figure 1: Isodose lines from a treatment plan using non-coplanar beams.